

infinity link

2 Way Wireless Transceiver for EC, EC-i, ESL & Runner Control Panels



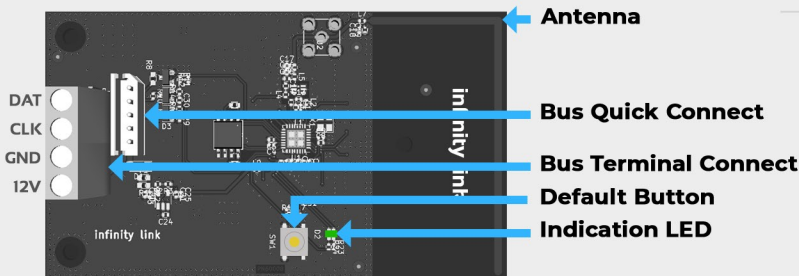
Specifications

Protocol	infinity 2 Way Encrypted
Wireless Range	Up to 500m Line of Sight
Frequency	915MHz OR 868MHz
Modulation Type	GFSK
Control Panel Support	EC, EC-i, ESL & Runner
Voltage	10 to 15VDC
Current	40mA
Operating Temperature	-20°C to 50°C
Environment Humidity	85% max
Dimensions	L90 x W52 x H18mm
Weight incl Battery	40g
Max Supported Devices	Up to 254 infinity wireless devices

Compatible Products

infinity remote	4 Button Remote
infinity input	Reed Switch
infinity output	1CH Relay Module
infinity motion	PIR Sensor
infinity motion IP54	Outdoor PIR Sensor
infinity siren	External Siren/Strobe
infinity panic	Waterproof Duress Button
infinity TX-B	1CH Boxed Transmitter
infinity link	Wireless Transceiver

Overview



Mounting Locations

- Do not mount in close proximity to concrete, steel or ferromagnetic materials
- Exterior installations require an IP65 enclosure
- Mount as close to wireless devices as possible & with zero or minimal obstructions
- Transmitting through dense material such as concrete, steel or similar is not recommended
- Use dedicated slot (shown here) when mounted inside the EC-CAB polycarbonate enclosure

Indication LED

The indication LED will illuminate **green** when receiving a wireless signal & also flash during system learn beeps

Default Programming

If the 'infinity link' has previously been paired with wireless products it may require defaulting. To do so, press and hold the gold 'Default' button while powering up the unit & continue to hold.

The LED will display **solid red** and **turn green** when default is successful

Warning: Defaulting the infinity link will lose connection with any/all previously paired products

